

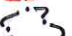



LEGENDA

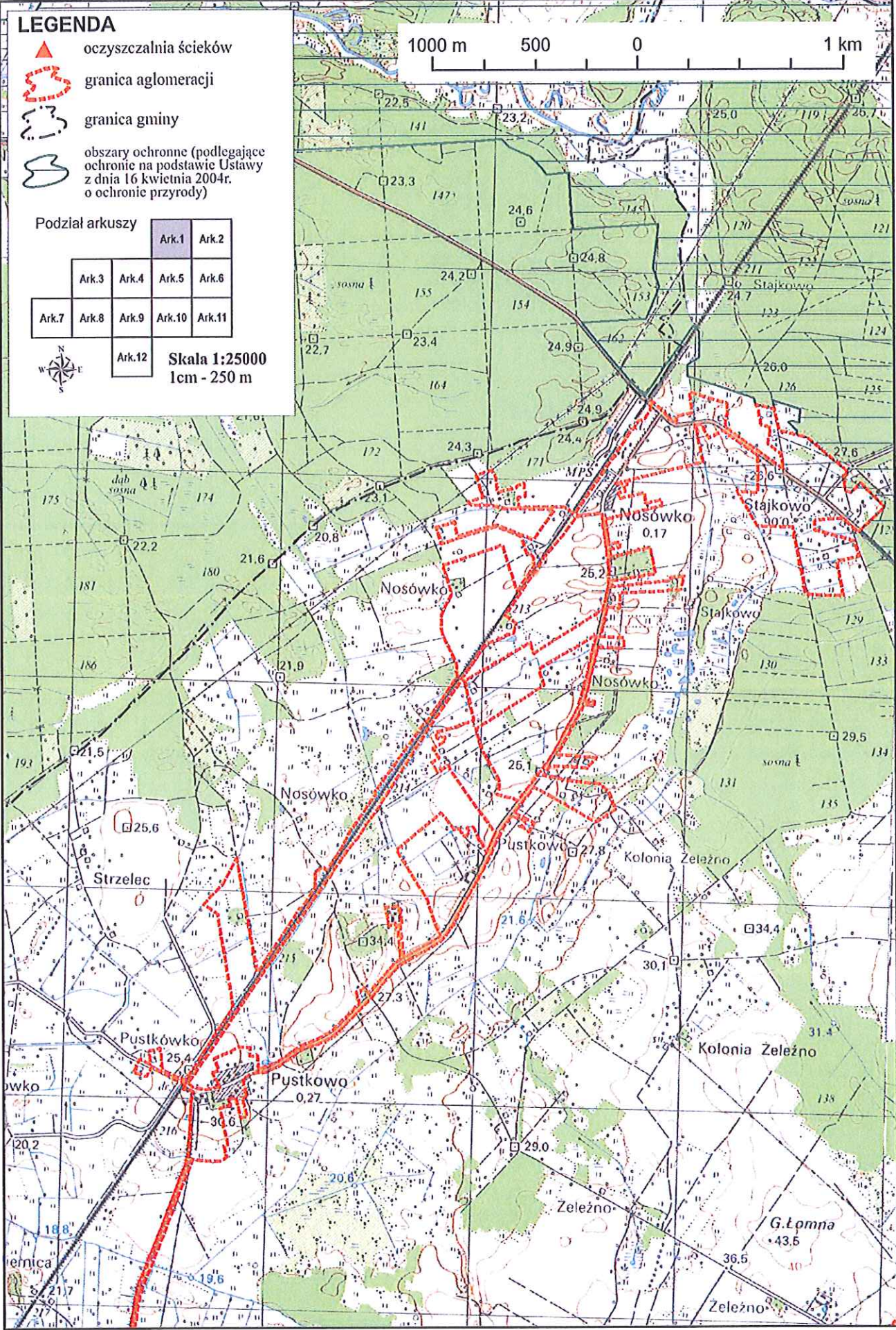
-  oczyszczalnia ścieków
-  granica aglomeracji
-  granica gminy
-  obszary ochronne (podlegające ochronie na podstawie Ustawy z dnia 16 kwietnia 2004r. o ochronie przyrody)

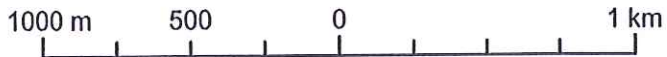
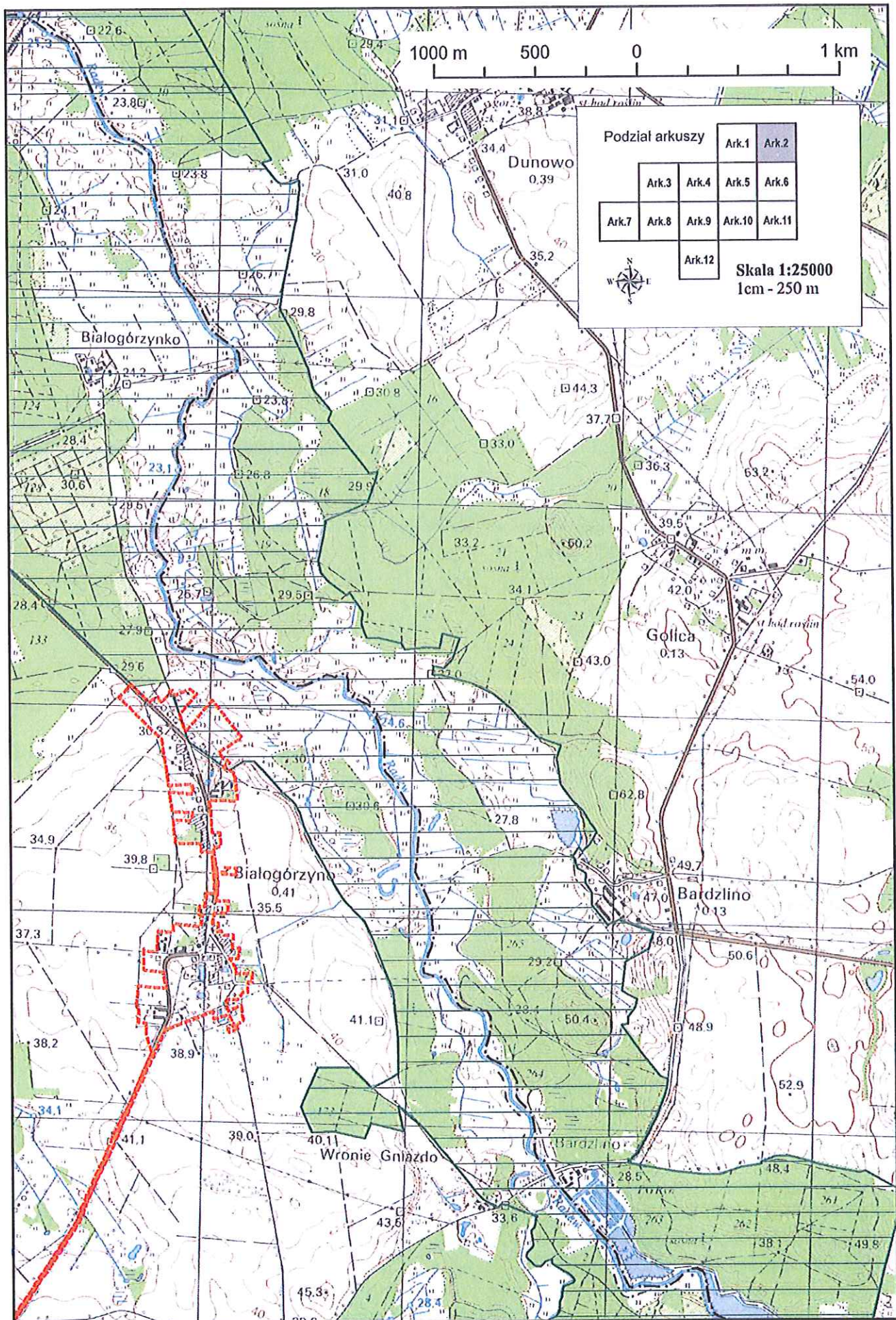
Podział arkuszy

		Ark.1	Ark.2	
	Ark.3	Ark.4	Ark.5	Ark.6
Ark.7	Ark.8	Ark.9	Ark.10	Ark.11
		Ark.12		



Skala 1:25000
1cm - 250m





Podział arkuszy

		Ark.1	Ark.2
	Ark.3	Ark.4	Ark.5
Ark.7	Ark.8	Ark.9	Ark.10
		Ark.12	



Skala 1:25000
1cm - 250 m

Dunowo
0.39

Białogórzynko

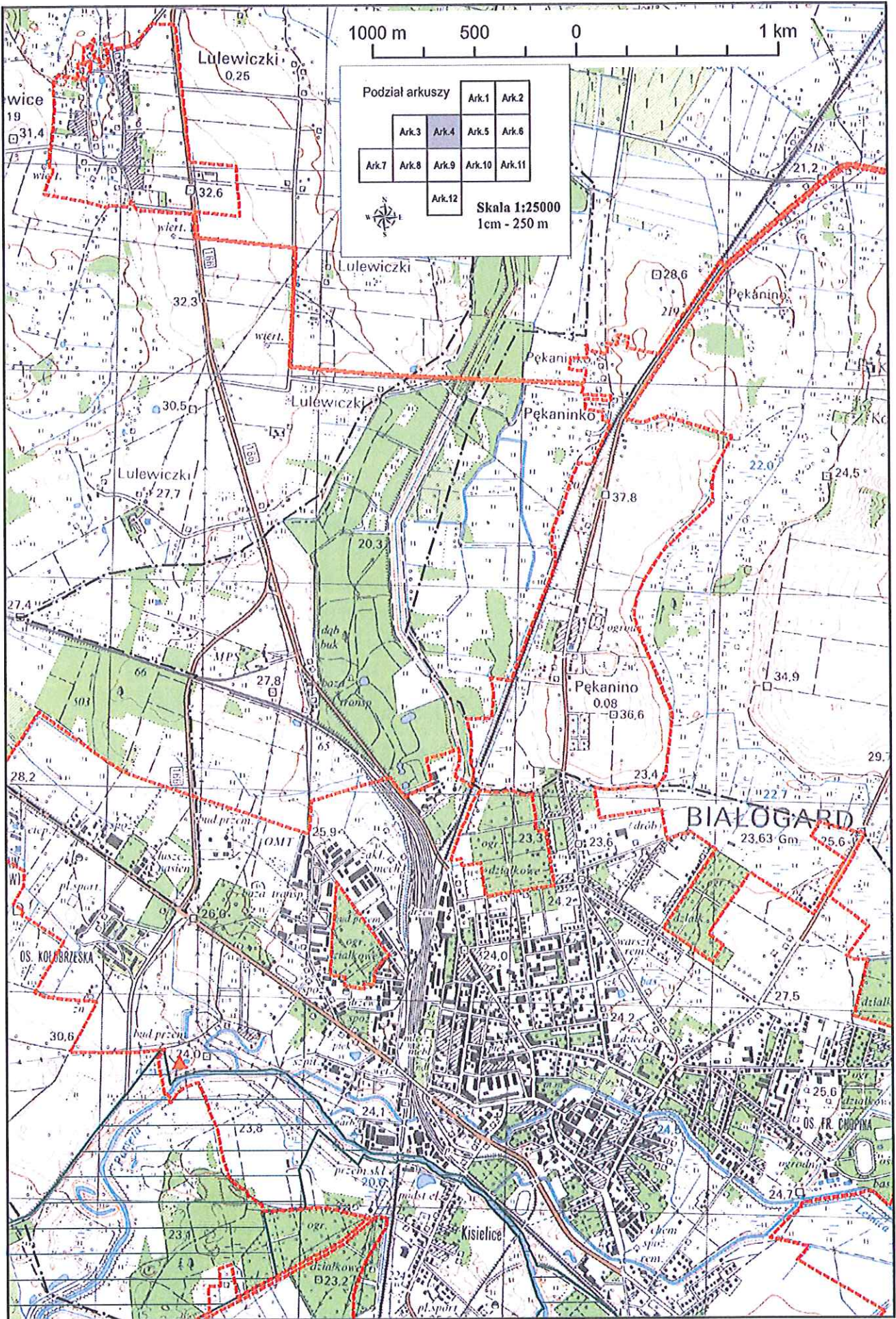
Golica
0.13

Białogórzyno
0.41

Bardzino
0.13

Wronie Gniazdo

Bardzino



wice
19
31.4

Lulewiczki
0.25

Lulewiczki
32.3

Lulewiczki
27.7

Lulewiczki
20.3

Pękaninko
28.6

Pękaninko
37.8

Pękanino
0.08
36.6

BIAŁOGARD
23.63 Gm

OS. KOŁBRZESKA

30.6

26.0

25.9

23.3

23.6

25.6

27.5

OS. FR. CHOPINA

24.7

Kisielice

23.2

25.6

24.7

24.1

23.8

23.9

23.8

23.8

23.8

23.8

23.8

23.8

23.8

23.8

23.8

23.8

23.8

23.8

23.8

23.8

23.8

23.8

23.8

23.8

23.8

23.8

23.8

23.8

23.8

23.8

23.8

23.8

23.8

23.8

23.8

23.8

23.8

23.8

23.8

23.8

23.8

23.8

23.8

23.8

23.8

23.8

23.8

23.8

23.8

23.8

23.8

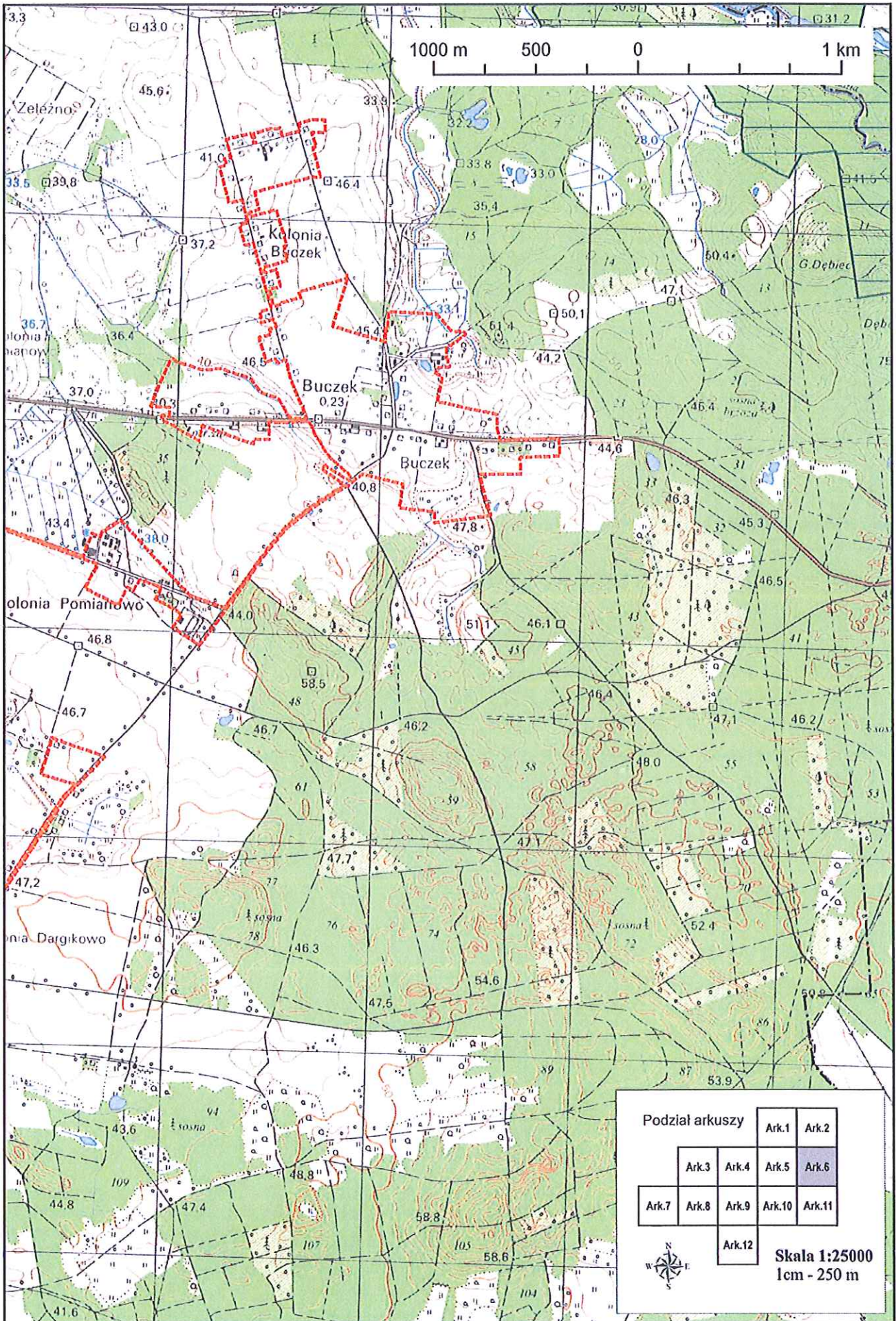
23.8

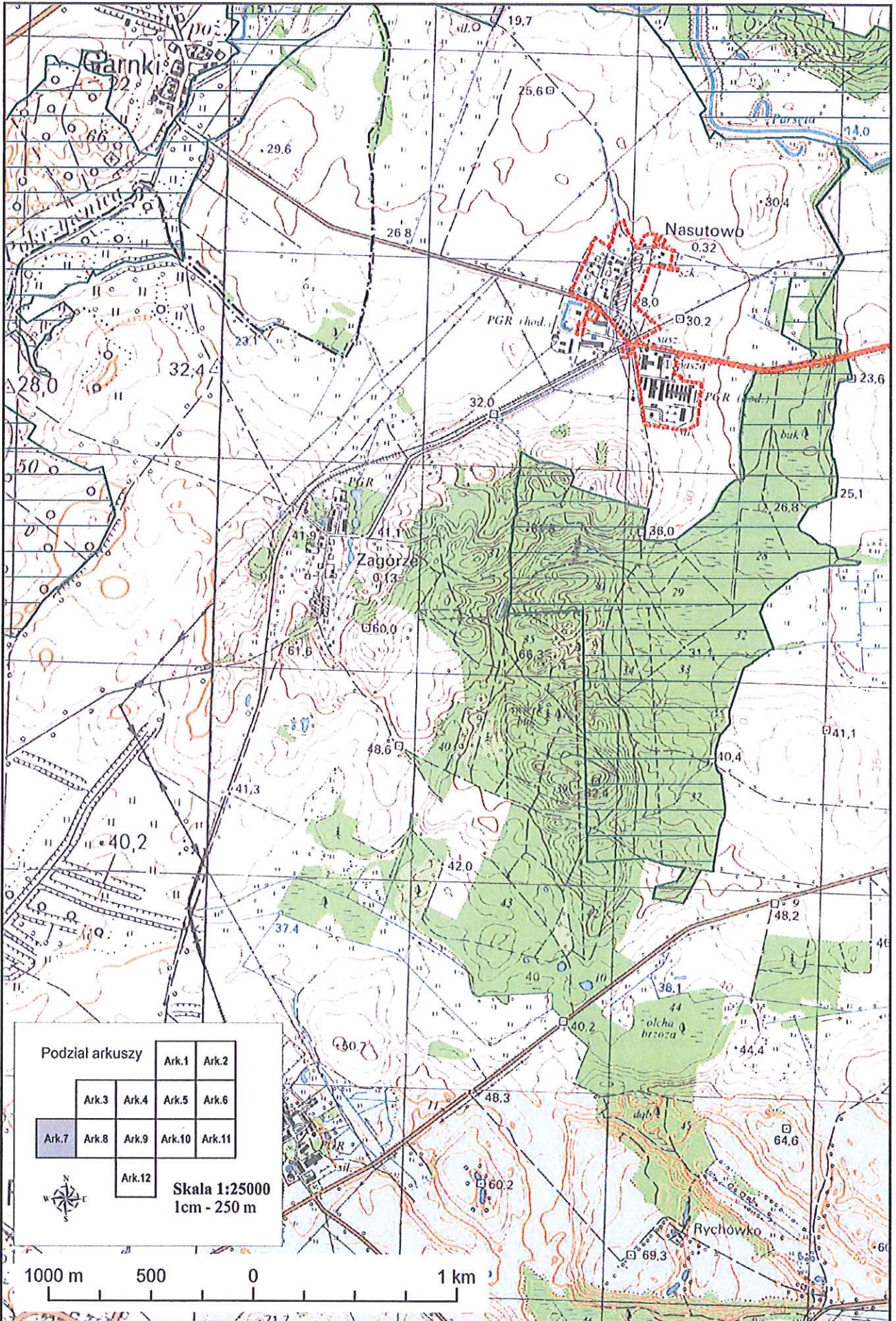
23.8

23.8

23.8

23.8



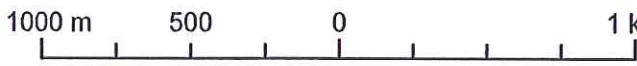


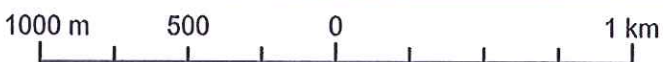
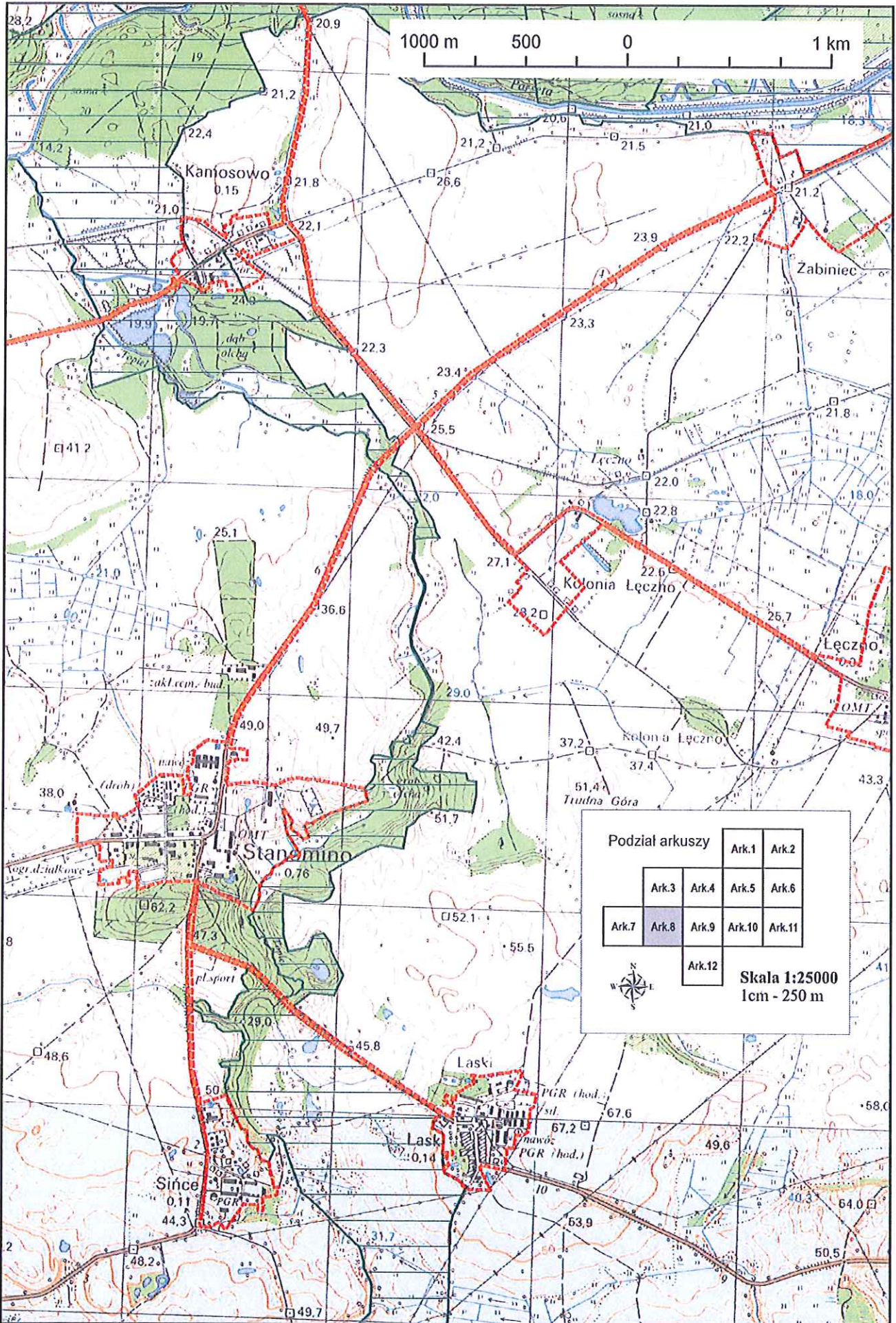
Podział arkuszy

	Ark.1	Ark.2		
Ark.3	Ark.4	Ark.5	Ark.6	
Ark.7	Ark.8	Ark.9	Ark.10	Ark.11
		Ark.12		



Skala 1:25000
1cm - 250 m

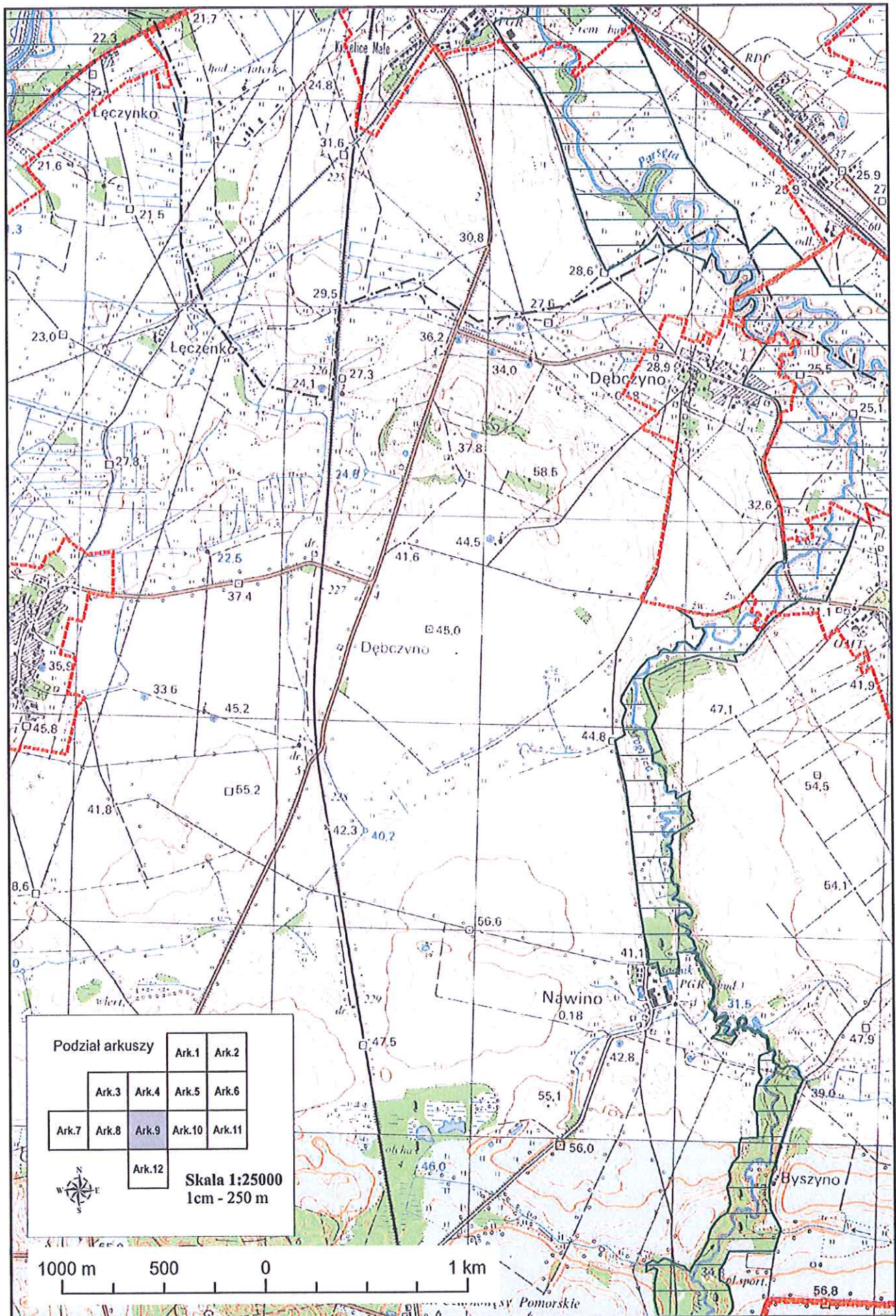




Podział arkuszy

	Ark.1	Ark.2
Ark.3	Ark.4	Ark.5
Ark.6	Ark.7	Ark.8
Ark.9	Ark.10	Ark.11
	Ark.12	

Skala 1:25000
1cm - 250 m

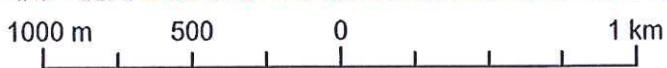


Podział arkuszy

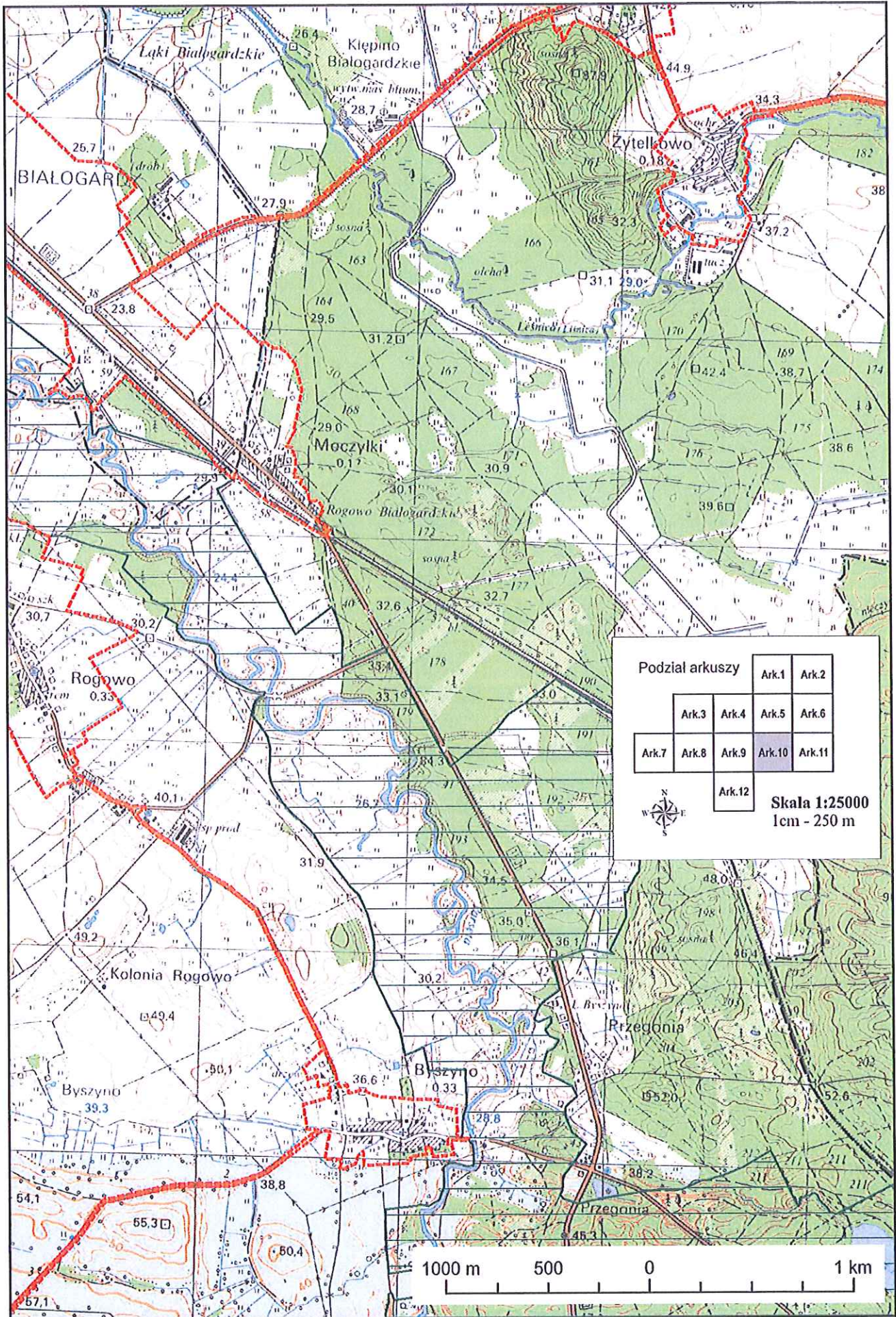
		Ark.1	Ark.2
	Ark.3	Ark.4	Ark.5
Ark.7	Ark.8	Ark.9	Ark.10
		Ark.12	



Skala 1:25000
1cm - 250 m



Województwo Pomorskie

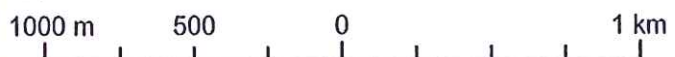


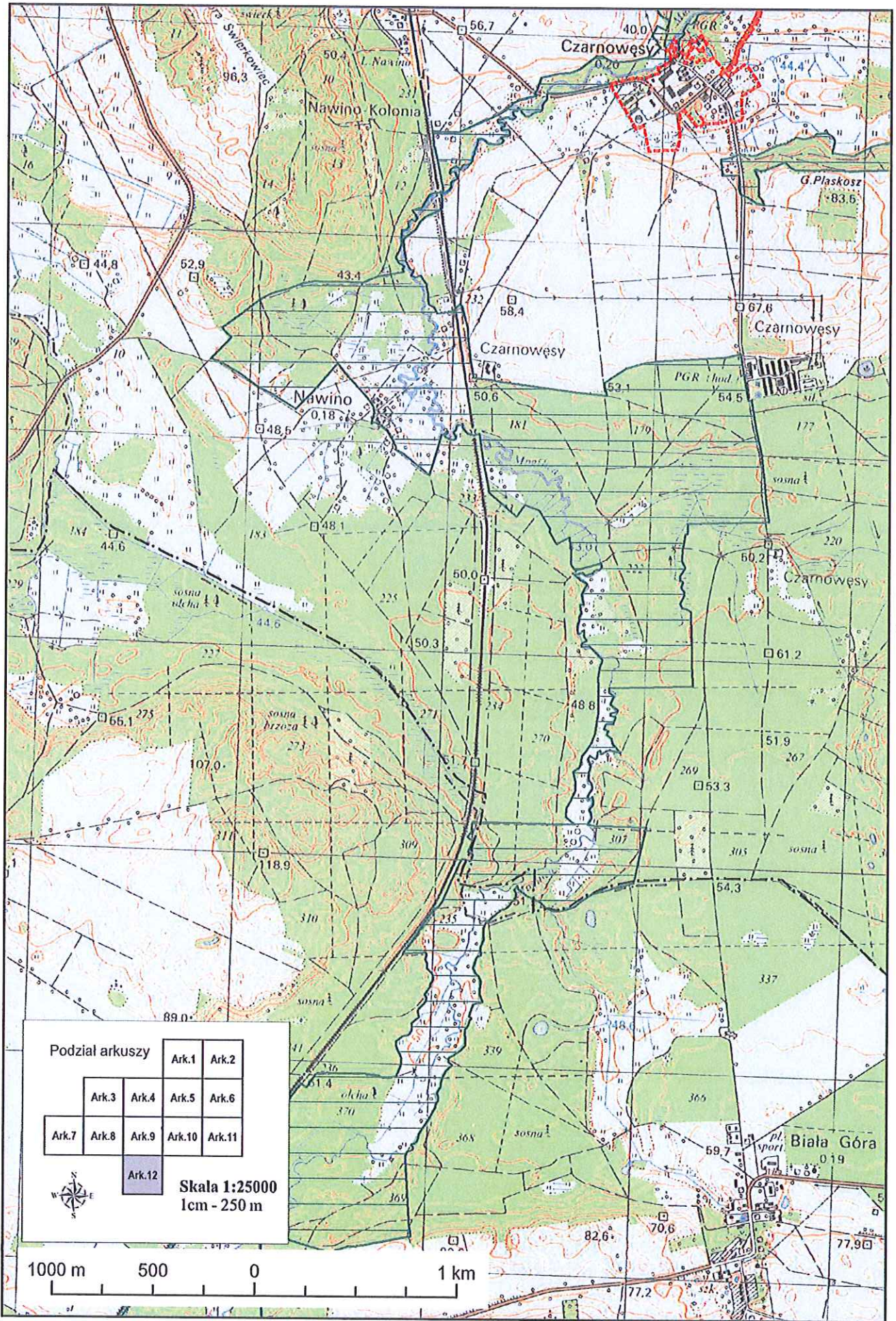
Podział arkuszy

		Ark.1	Ark.2
	Ark.3	Ark.4	Ark.5
Ark.7	Ark.8	Ark.9	Ark.10
		Ark.12	



Skala 1:25000
1cm - 250 m





Podział arkuszy

	Ark.1	Ark.2
Ark.3	Ark.4	Ark.5
Ark.6	Ark.7	Ark.8
Ark.9	Ark.10	Ark.11
Ark.12		



Skala 1:25000
1cm - 250m

